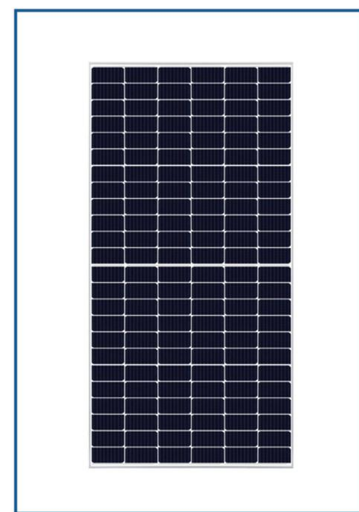


SOLAR POWER SYSTEM

- ON-GRID SOLAR POWER SYSTEMS
- OFF-GRID SOLAR POWER SYSTEMS
- HYBRID INVERTER SOLAR SYSTEM



Solar Panels



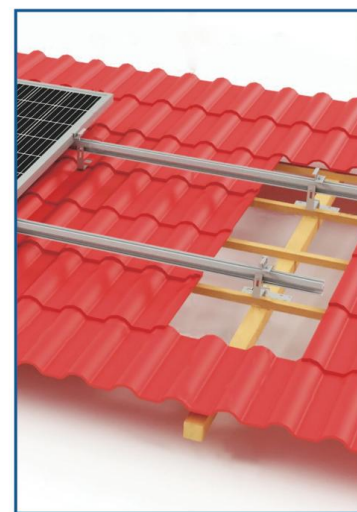
Power Distribution Box



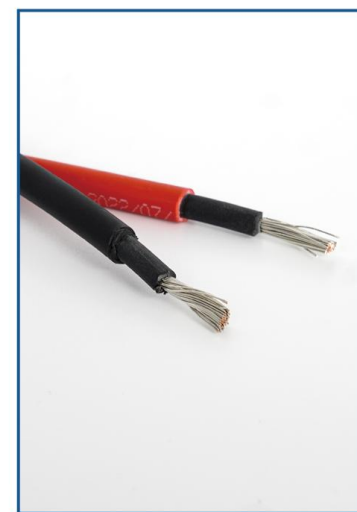
Inverter



Energy Storage Battery



Solar Panel Brackets



Cable



Residential



Commercial

SINGLE PHASE & SINGLE MPPT INVERTER

SE 2/3/3.6KTL-S1/G2

Application: Family Use



SUPERIOR EFFICIENCY

- Maximum efficiency 97.8%
- String Current 13A, compatible with high Power modules
- 150% PV configuration, 110% output overload



HIGH RELIABILITY

- IP65 waterproof and dustproof, C5 anti-corrosion
- Compatible with wide power grid voltage and high harmonic power grid environment
- DC /AC SPD optional, AFCI detection optional



INTELLIGENT MAINTENANCE

- Remote configuration and upgrade
- Supports export power control

Model	SE 2KTL-S1/G2	SE 3KTL-S1/G2	SE 3K6TL-S1/G2
Efficiency			
Max. Efficiency	97.5%	97.8%	97.8%
European Efficiency	96.5%	96.8%	96.8%
Input(PV)			
Max. Input Voltage		500V	
Max. PV configuration (STC)		150%	
Rated Input Voltage		360V	
Max. Input Current		13A	
Max.Short Circuit Current		15A	
Start Input Voltage		70V	
MPPT Operating Voltage Range		50V-490V	
Max. Number of PV Strings		1	
No. of MPPTs		1	
Output(Grid)			
Rated AC Active Power	2,000W	3,000W	3,600W
Max. AC Apparent Power	2,200VA	3,300VA	3,600VA
Max. AC Active Power (PF=1)	2,200W	3,300W	3,600W
Max. AC Output Current	10A	15A	16.0A
Rated AC Voltage	220V/230V, L+N+PE		
AC Voltage Range①	160V-300V (Adjustable)		
Rated Grid Frequency	50Hz / 60Hz		
Grid Frequency Range②	45Hz-55Hz / 55Hz-65Hz (Adjustable)		
THDI	<3% (Rated Power)		
DC Current Injection	<0.5%In		
Power Factor	>0.99 Rated power (Adjustable 0.8 Leading-0.8 Lagging)		
Protection			
DC switch	Support		
Anti-islanding protection	Support		
AC overcurrent protection	Support		
AC short circuit protection	Support		
DC reverse connection	Support		
Surge Arrester	DC Type III (Optional) / AC Type III		
Insulation detection	Support		
Leakage current protection	Support		
General			
Topology	Transformerless		
IP Rating	IP65		
Night Self Consumption	<1W		
Cooling	Natural cooling		
Operating Temperature Range	-25°C-60°C		
Relative Humidity Range	0-100%		
Max. Operating Altitude	4000m		
Noise (typical)	30dB		
Dimensions (W*H*D)	320mm*344mm*137mm		
Weight	6.5kg		
HMI & COM			
Display	Wireless & APP+LED, LCD (Optional)		
Communication	WiFi (Optional) / GPRS (Optional) / RS485 (Optional)		
Certification			
Safety	IEC62109-1, IEC62109-2		
Grid Code	IEC61727 / 62116, ABNT 16149 / 16150, IEEE 1547, AS 4777		
Warranty	5 Years		

Remarks: • ①②The range of output voltage and frequency may vary depending upon different grid codes.
• Specifications are subject to change without advance notice.

SINGLE PHASE & DUAL MPPT INVERTER

SE 4/5/6KTL-D1/G2

Application: Family Use



SUPERIOR EFFICIENCY

- Maximum efficiency 98.2%
- String Current 13A, compatible with high Power modules
- 150% PV configuration, 110% output overload



HIGH RELIABILITY

- IP65 waterproof and dustproof, C5 anti-corrosion
- Compatible with wide power grid voltage and high harmonic power grid environment
- DC /AC SPD optional, AFCI detection optional



INTELLIGENT MAINTENANCE

- Remote configuration and upgrade
- Supports export power control

Model	SE 4KTL-D1/G2	SE 5KTL-D1/G2	SE 6KTL-D1/G2
Efficiency			
Max. Efficiency	98.0%	98.2%	98.2%
European Efficiency	97.0%	97.3%	97.4%
Input(PV)			
Max. Input Voltage		550V	
Max. PV configuration (STC)		150%	
Rated Input Voltage		360V	
Max. Input Current		26A (2*13A)	
Max.Short Circuit Current		30A (2*15A)	
Start Input Voltage		90V	
MPPT Operating Voltage Range		70V-540V	
Max. Number of PV Strings		2(1/1)	
No. of MPPTs		2	
Output(Grid)			
Rated AC Active Power	4,000W	5,000W	6,000W
Max. AC Apparent Power	4,400VA	5,500VA	6,000VA
Max. AC Active Power (PF=1)	4,400W	5,500W	6,000W
Max. AC Output Current	20A	25A	27.3A
Rated AC Voltage	220V/230V, L+N+PE		
AC Voltage Range①	160V-300V (Adjustable)		
Rated Grid Frequency	50Hz / 60Hz		
Grid Frequency Range②	45Hz-55Hz / 55Hz-65Hz (Adjustable)		
THDI	<3% (Rated Power)		
DC Current Injection	<0.5%In		
Power Factor	>0.99 Rated power (Adjustable 0.8 Leading-0.8 Lagging)		
Protection			
DC switch		Support	
Anti-islanding protection		Support	
AC overcurrent protection		Support	
AC short circuit protection		Support	
DC reverse connection		Support	
Surge Arrester		DC Type III (Optional) / AC Type III	
Insulation detection		Support	
Leakage current protection		Support	
General			
Topology		Transformerless	
IP Rating		IP65	
Night Self Consumption		<1W	
Cooling		Natural cooling	
Operating Temperature Range		-25°C-60°C	
Relative Humidity Range		0-100%	
Max. Operating Altitude		4000m	
Noise (typical)		30dB	
Dimensions (W*H*D)		347mm*350mm*137mm	
Weight		8.5kg	
HMI & COM			
Display		Wireless & APP+LED, LCD (Optional)	
Communication		WiFi (Optional) / GPRS (Optional) / RS485 (Optional)	
Certification			
Safety		IEC62109-1, IEC62109-2	
Grid Code		IEC61727 / 62116, ABNT 16149 / 16150, IEEE 1547, AS 4777	
Warranty		5 Years	

Remarks : • ①②The range of output voltage and frequency may vary depending upon different grid codes.
• Specifications are subject to change without advance notice.

SINGLE PHASE & DUAL MPPT INVERTER

SE 7/8/10KTL-D1

Application: Family Use



SUPERIOR EFFICIENCY

- Maximum efficiency 98.2%
- String Current 13A, compatible with high Power modules
- 150% PV configuration, 110% output overload



HIGH RELIABILITY

- IP65 waterproof and dustproof, C5 anti-corrosion
- Compatible with wide power grid voltage and high harmonic power grid environment
- DC /AC SPD optional, AFCI detection optional



INTELLIGENT MAINTENANCE

- Remote configuration and upgrade
- Supports export power control

Model	SE 7KTL-D1	SE 8KTL-D1	SE 10KTL-D1
Efficiency			
Max. Efficiency	98.2%	98.2%	98.2%
European Efficiency	97.4%	97.5%	97.6%
Input(PV)			
Max. Input Voltage		550V	
Max. PV configuration (STC)		150%	
Rated Input Voltage		360V	
Max. Input Current	26A (2*13A)		39A (2*13A+13A)
Max.Short Circuit Current	30A (2*15A)		45A(2*15A+15A)
Start Input Voltage		90V	
MPPT Operating Voltage Range		70V-540V	
Max. Number of PV Strings	2(1/1)		3(2/1)
No. of MPPTs		2	
Output(Grid)			
Rated AC Active Power	7,000W	8,000W	10,000W
Max. AC Apparent Power	7,700VA	8,800VA	10,000VA
Max. AC Active Power (PF=1)	7,700W	8,800W	10,000W
Max. AC Output Current	35A	40A	45.5A
Rated AC Voltage		220V/230V, L+N+PE	
AC Voltage Range①		160V-300V (Adjustable)	
Rated Grid Frequency		50Hz / 60Hz	
Grid Frequency Range②		45Hz-55Hz / 55Hz-65Hz (Adjustable)	
THDI		<3% (Rated Power)	
DC Current Injection		<0.5%In	
Power Factor		>0.99 Rated power (Adjustable 0.8 Leading-0.8 Lagging)	
Protection			
DC switch		Support	
Anti-islanding protection		Support	
AC overcurrent protection		Support	
AC short circuit protection		Support	
DC reverse connection		Support	
Surge Arrester		DC Type III (Optional) / AC Type III	
Insulation detection		Support	
Leakage current protection		Support	
General			
Topology		Transformerless	
IP Rating		IP65	
Night Self Consumption		<1W	
Cooling		Natural cooling	
Operating Temperature Range		-25°C-60°C	
Relative Humidity Range		0-100%	
Max. Operating Altitude		4000m	
Noise (typical)		30dB	
Dimensions (W*H*D)		400mm*450mm*170mm	
Weight		16kg	
HMI & COM			
Display		Wireless & APP+LED, LCD (Optional)	
Communication		WiFi (Optional) / GPRS (Optional) / RS485 (Optional)	
Certification			
Safety		IEC62109-1, IEC62109-2	
Grid Code		IEC61727 / 62116, ABNT 16149 / 16150, IEEE 1547, AS 4777	
Warranty		5 Years	

Remarks : • ①②The range of output voltage and frequency may vary depending upon different grid codes.
• Specifications are subject to change without advance notice.

THREE PHASE & DUAL MPPT INVERTER

SE 6/8/10/12/15KTL

Application: Family Use



SUPERIOR EFFICIENCY

- Maximum efficiency 98.4%
- String current 13A, compatible with high power modules
- 150% PV configuration, 110% output overload



HIGH RELIABILITY

- Natural Cooling
- Die-cast aluminum case
- APP for local settings & display



INTELLIGENT MAINTENANCE

- Easy installation, light weight and small size
- Remote configuration and upgrade
- Supports export control

Model	SE 6KTL	SE 8KTL	SE 10KTL	SE 12KTL	SE 15KTL
Efficiency					
Max. Efficiency	98.2%	98.2%	98.4%	98.4%	98.4%
European Efficiency	97.8%	97.8%	98.0%	98.0%	98.0%
Input(PV)					
Max. Input Voltage	1000V				
Max. PV configuration (STC)	150%				
Rated Input Voltage	620V				
Max. Input Current	26A (2*13A)		39A (2*13A+13A)		
Max.Short Circuit Current	30A (2*15A)		45A(2*15A+15A)		
Start Input Voltage	200V				
MPPT Operating Voltage Range	160V-950V				
Max. Number of PV Strings	2(1/1)		3(2/1)		
No. of MPPTs	2				
Output(Grid)					
Rated AC Active Power	6,000W	8,000W	10,000W	12,000W	15,000W
Max. AC Apparent Power	6,600VA	8,800VA	11,000VA	13,200VA	16,500VA
Max. AC Active Power (PF=1)	6,600W	8,800W	11,000W	13,200W	16,500W
Max. AC Output Current	3*10A	3*13A	3*16A	3*18.2A	3*22.7A
Rated AC Voltage	380V/400V, 3W+N+PE				
AC Voltage Range①	277V-520V (adjustable)				
Rated Grid Frequency	50Hz / 60Hz				
Grid Frequency Range②	45Hz-55Hz / 55Hz-65Hz (Adjustable)				
THDI	<3% (Rated Power)				
DC Current Injection	<0.5%In				
Power Factor	>0.99 Rated power (Adjustable 0.8 Leading-0.8 Lagging)				
Protection					
DC switch	Support				
Anti-islanding protection	Support				
AC overcurrent protection	Support				
AC short circuit protection	Support				
DC reverse connection	Support				
Surge Arrester	AC Type III				
Insulation detection	Support				
Leakage current protection	Support				
General					
Topology	Transformerless				
IP Rating	IP65				
Night Self Consumption	<1W				
Cooling	Natural cooling				
Operating Temperature Range	-25°C-60°C				
Relative Humidity Range	0-100%				
Max. Operating Altitude	4000m				
Noise	<30dB				
Dimensions (W*H*D)	400mm*500mm*190mm				
Weight	18.9kg		21.8kg		
HMI & COM					
Display	Wireless & APP+LED, LCD (Optional)				
Communication	RS485, WiFi / GPRS / 4G / LAN (Optional)				
Certification					
Safety	IEC62109-1, IEC62109-2				
Grid Code	IEC61727/62116				
Warranty	5 Years				

Remarks: • ①②The range of output voltage and frequency may vary depending upon different grid codes.
• Specifications are subject to change without advance notice.

THREE PHASE & DUAL MPPT

SE 17/20/22KTL-D3

Application: Small-sized Industrial and Residential Use



SUPERIOR EFFICIENCY

- Maximum efficiency 98.6%
- String current 13A, compatible with high power modules
- 150% PV configuration, 110% output overload



HIGH RELIABILITY

- Natural Cooling
- Integrated type II DC/AC SPD
- APP for local settings & display



INTELLIGENT MAINTENANCE

- Remote configuration and upgrade
- Supports export control

Model	SE 17KTL-D3	SE 20KTL-D3	SE 22KTL-D3
Efficiency			
Max. Efficiency	98.6%	98.6%	98.6%
European Efficiency	98.2%	97.7%	98.2%
Input(PV)			
Max. Input Voltage		1000V	
Max. PV configuration (STC)		150%	
Rated Input Voltage		620V	
Max. Input Current		54A(2*27A)	
Max.Short Circuit Current		60A(2*30A)	
Start Input Voltage		250V	
MPPT Operating Voltage Range		180V-960V	
Max. Number of PV Strings		4(2/2)	
No. of MPPTs		2	
Output(Grid)			
Rated AC Active Power	17,000W	20,000W	22,000W
Max. AC Apparent Power	18,700VA	22,000VA	24,200VA
Max. AC Active Power (PF=1)	18,700VA	22,000W	24,200W
Max. AC Output Current	3*28.3A	3*33.5A	3*35A
Rated AC Voltage		380V/400V, 3W+N+PE	
AC Voltage Range①		277V-520V (Adjustable)	
Rated Grid Frequency		50Hz / 60Hz	
Grid Frequency Range②		45Hz-55Hz / 55Hz-65Hz (Adjustable)	
THDI		<3% (Rated Power)	
DC Current Injection		<0.5%In	
Power Factor		>0.99 Rated power (Adjustable 0.8 LG - 0.8 LD)	
Protection			
DC switch		Support	
Anti-islanding protection		Support	
AC overcurrent protection		Support	
AC short circuit protection		Support	
DC reverse connection		Support	
Surge Arrester		DC Type II / AC Type II	
Insulation detection		Support	
Leakage current protection		Support	
General			
Topology		Transformerless	
IP Rating		IP65	
Night Self Consumption		<1W	
Cooling		Natural cooling	
Operating Temperature Range		-25°C-60°C	
Relative Humidity Range		0-100%	
Max. Operating Altitude		4000m	
Noise		<30dB	
Dimensions (W*H*D)		555mm*446mm*270mm	
Weight		35kg	
HMI & COM			
Display		Wireless & APP+LED, LCD (Optional)	
Communication		RS485, WiFi / GPRS / 4G / LAN (Optional)	
Certification			
Safety		IEC62109-1, IEC62109-2	
Grid Code		IEC61727/62116	
Warranty		5 Years	

Remarks: • ①②The range of output voltage and frequency may vary depending upon different grid codes.
• Specifications are subject to change without advance notice.

THREE PHASE & DUAL MPPT INVERTER SE 25/28/30KTL-D3

Application: Small-sized Industrial and Residential Use



SUPERIOR EFFICIENCY

- Maximum efficiency 98.6%
- String current 13A, compatible with high power modules
- 150% PV configuration, 110% output overload



HIGH RELIABILITY

- Integrated type II DC/AC SPD
- APP for local settings & display



INTELLIGENT MAINTENANCE

- Remote configuration and upgrade
- Supports export control

Model	SE 25KTL-D3	SE 28KTL-D3	SE 30KTL-D3
Efficiency			
Max. Efficiency	98.6%	98.6%	98.6%
European Efficiency	98.3%	98.3%	98.3%
Input(PV)			
Max. Input Voltage		1000V	
Max. PV configuration (STC)		150%	
Rated Input Voltage		620V	
Max. Input Current		81A(2*40.5A)	
Max.Short Circuit Current		90A(2*45A)	
Start Input Voltage		250V	
MPPT Operating Voltage Range		180V-960V	
Max. Number of PV Strings		6(3/3)	
No. of MPPTs		2	
Output(Grid)			
Rated AC Active Power	25,000W	28,000W	30,000W
Max. AC Apparent Power	27,500VA	30,800VA	33,000VA
Max. AC Active Power (PF=1)	27,500VA	30,800W	33,000W
Max. AC Output Current	3*40A	3*45A	3*48A
Rated AC Voltage		380V/400V, 3W+N+PE	
AC Voltage Range①		277V-520V (Adjustable)	
Rated Grid Frequency		50Hz / 60Hz	
Grid Frequency Range②		45Hz-55Hz / 55Hz-65Hz (Adjustable)	
THDI		<3% (Rated Power)	
DC Current Injection		<0.5%In	
Power Factor		>0.99 Rated power (Adjustable 0.8 LG - 0.8 LD)	
Protection			
DC switch		Support	
Anti-islanding protection		Support	
AC overcurrent protection		Support	
AC short circuit protection		Support	
DC reverse connection		Support	
Surge Arrester		DC Type II / AC Type II	
Insulation detection		Support	
Leakage current protection		Support	
General			
Topology		Transformerless	
IP Rating		IP65	
Night Self Consumption		<1W	
Cooling		Fan cooling	
Operating Temperature Range		-25°C-60°C	
Relative Humidity Range		0-100%	
Max. Operating Altitude		4000m	
Noise		<50dB	
Dimensions (W*H*D)		555mm*446mm*270mm	
Weight		41kg	
HMI & COM			
Display		Wireless & APP+LED, LCD (Optional)	
Communication		RS485, WiFi / GPRS / 4G / LAN (Optional)	
Certification			
Safety		IEC62109-1, IEC62109-2	
EMC		EN 61000-6-2/4	
Grid Code		IEC61727/62116	
Warranty		5 Years	

Remarks: • ①②The range of output voltage and frequency may vary depending upon different grid codes.
• Specifications are subject to change without advance notice.

THREE PHASE & QUAD MPPT INVERTER

SE 50/60KTL

Application: Large-scale Industrial and Commercial Sites



SUPERIOR EFFICIENCY

- Maximum efficiency 99.0%
- String current 13A, compatible with high power modules
- 150% PV configuration, 110% output overload



HIGH RELIABILITY

- Integrated type II DC/AC SPD
- APP for local settings & display
- High quality components use



INTELLIGENT MAINTENANCE

- String level I/V detect(Optional)
- Remote configuration and upgrade
- Supports export control

Model	SE 50KTL	SE 60KTL
Efficiency		
Max. Efficiency	99.0%	99.0%
European Efficiency	98.5%	98.5%
Input(PV)		
Max. Input Voltage	1100V	
Max. PV configuration (STC)	150%	
Rated Input Voltage	620V	
Max. Input Current	130A (39A/39A/26A/26A)	156A (39A/39A/39A/39A)
Max.Short Circuit Current	150A(45A/45A/30A/30A)	180A(45A/45A/45A/45A)
Start Input Voltage	250V	
MPPT Operating Voltage Range	200V-1000V	
Max. Number of PV Strings	10(3/3/2/2)	12(3/3/3/3)
No. of MPPTs	4	
Output(Grid)		
Rated AC Active Power	50,000W	60,000W
Max. AC Apparent Power	55,000VA	66,000VA
Max. AC Active Power (PF=1)	55,000W	66,000W
Max. AC Output Current	3*76A	3*92A
Rated AC Voltage	380V/400V, 3W+N+PE	
AC Voltage Range①	277V-520V (Adjustable)	
Rated Grid Frequency	50Hz / 60Hz	
Grid Frequency Range②	45Hz-55Hz / 55Hz-65Hz (Adjustable)	
THDI	<3% (Rated Power)	
DC Current Injection	<0.5%In	
Power Factor	>0.99 Rated power (Adjustable 0.8 Leading - 0.8Lagging)	
Protection		
DC switch	Support	
Anti-islanding protection	Support	
AC overcurrent protection	Support	
AC short circuit protection	Support	
DC reverse connection	Support	
Surge Arrester	DC Type II / AC Type II	
Insulation detection	Support	
Leakage current protection	Support	
General		
Topology	Transformerless	
IP Rating	IP65	
Night Self Consumption	<1W	
Cooling	Fan cooling	
Operating Temperature Range	-25°C-60°C	
Relative Humidity Range	0-100%	
Max. Operating Altitude	4000m	
Noise	<62dB	
Dimensions (W*H*D)	855mm*555mm*275mm	
Weight	73kg	74Kg
HMI & COM		
Display	Wireless & APP+LED, LCD (Optional)	
Communication	RS485, WiFi / GPRS / 4G / LAN (Optional)	
Certification		
Safety	IEC62109-1, IEC62109-2	
Grid Code	IEC61727/62116, AS 4777	
Warranty	5 Years	

Remarks: • ①②The range of output voltage and frequency may vary depending upon different grid codes.
• Specifications are subject to change without advance notice.